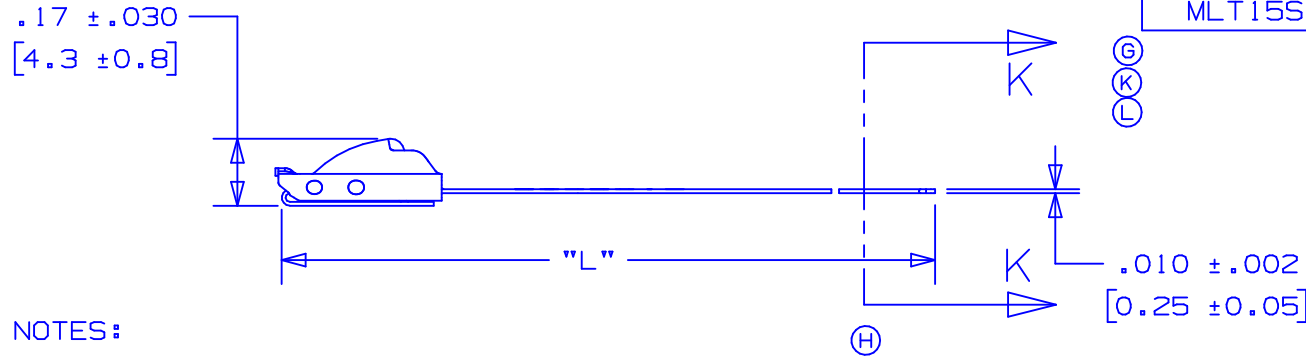


PANDUIT PART NO.	MAX BUNDLE DIA.	PACKAGE QTY	LENGTH L ±.3 [7] (D)
MLT1S-CP	1" [25]	100	5.0" [127]
(B) MLT2S-CP	2" [51]	100	7.9" [201]
(F) MLT2.7S-CP	2.7" [69]	100	10.2" [259]
(C) MLT4S-CP	4" [102]	100	14.3" [362]
MLT6S-CP	6" [152]	100	20.5" [521]
(E) MLT8S-CP	8" [203]	100	26.8" [679]
MLT10S-CP	10" [254]	100	33.0" [838]
MLT12S-Q	12" [304]	25	39.3" [998]
MLT14S-Q	14" [355]	25	45.5" [1156]
MLT15S-Q	15" [380]	25	49.2" [1250]



NOTES:

- (A) 1.) APPLICATION TOOLS - GS4MT, PPTMT, ST2MT, ST3MT, HTMT
- 2.) MINIMUM LOOP TENSILE STRENGTH - 200 LBS (889 NEWTONS) WHEN TESTED ON A 1.5" MANDREL.
- 3.) [ ] DENOTES DIMENSION IN MILLIMETERS
- 4.) TOLERANCES:  
 .XXX = ±.010 [.25] .XX = ±.02 [.5]  
 .X = ±.03 [.8] ANGLES = ±2°
- 5.) MATERIAL: 304 STAINLESS STEEL



SECTION K - K  
SCALE: 8x

06	3/05	JAMB	BJO	(M) OLD TIP CONFIGURATION REPLACED WITH NEW TIP CONFIGURATION	12491	CCH	JJB
05	11/04	JMMR	EJD	(L) REMOVED PART NO. MLT16S-Q FROM TABLE	12192	CCH	JJB
04	10/04	JAMB	EJD	(K) ADDED PART NO. MLT16S-Q TO TABLE.	12179	CCH	JJB
03	8/04	JAMB	DPN	(J) REMOVED "AISI NO.1 FULL RADIUSED" & REPLACED WITH "FULLY ROUNDED"	11907	CCH	JJB
02	8/04	JAMB	DPN	(H) ADDED APPLICATION TOOL "ST3MT"	11292	CCH	JJB
01	6/03	JAMB	DPN	(A) MIN LOOP TENSILE STRENGTH WAS 100 LBS. (445 NEWTONS) (B) MAX. BUNDLE DIA. [mm] WAS [50] (C) MAX. BUNDLE DIA. [mm] WAS [101], LGTH. WAS 14.2 [361] (D) TOL. WAS ±.2 [5] (E) LGTH. [mm] WAS [681] (F) MAX. BUNDLE DIA. [mm] WAS [68] (G) REMOVED PART NO. MLT16S-Q	10568	CCH	JJB
REV	DATE	BY	CHK	DESCRIPTION	ECN #	PM	CUST

**PANDUIT**

CORP.

TINLEY PARK, ILLINOIS

METAL LOCKING TIE  
STANDARD SERIES-304 STAINLESS STEEL

DRAWN BY JAMB	CHK'D DPN	SCALE 2x	DRAWING NO. S41119
------------------	--------------	-------------	-----------------------

S41119\_06